



# Collaborative on Health and the Environment - Washington



Biweekly Bulletin July 14, 2010

This bulletin lists upcoming events plus recent announcements, news and journal articles, calls for proposals and other items related to learning environmental contributors to human health in Washington State and the Pacific Northwest. They are archived and searchable on our website: <http://washington.chenw.org/bulletins.html>

## CHE-WA Highlights

### New members

CHE-Washington welcomes these new members:

- Maureen Judge, Seattle
- Annabelle Lota, Federal Way
- Taylor Watson, Seattle

For a searchable database of organizations with which CHE-WA members are affiliated, please visit the CHE-WA website: <http://washington.chenw.org/members.html>

## Lessons Learned

### Caffeine: Stimulant / Money Maker

by Steven G. Gilbert, PhD, DABT

#### Caffeine Industry

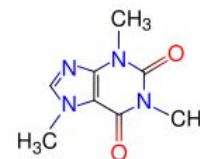
"The coffee and cola industries owe their wealth to the physiological properties of the drug caffeine." - from Steven G. Gilbert, PhD

#### Coffee

"Black as hell, strong as death, sweet as love." - a Turkish proverb.

"Often coffee drinkers, finding the drug to be unpleasant, turn to other narcotics, of which opium and alcohol are most common." - from *Morphinism and Narcomanias from Other Drugs* (1902) by T. D. Crothers, MD

Caffeine use dates back to the Stone Age and is today the most widely used stimulant in the world. It is a xanthine alkaloid compound found in plants where it acts as a natural pesticide paralyzing and killing certain insects. In humans caffeine stimulates the central nervous system and is widely available in drinks such as tea, coffee, soft drinks and chocolate.



Emperor Shen Nung is credited in Chinese lore as having discovered tea, a popular beverage containing caffeine, in 2737 BCE while sitting under a wild tea tree drinking a cup of hot water when a tea leaf fell into his drink. Caffeine was first isolated from plants in 1895 by Emil (October 9, 1852 - July 15, 1919), a Nobel Prize-winning German chemist. He also contributed to the knowledge and classification of certain sugars and proteins.

Caffeine is an amazing drug both as a powerful stimulant and a money-maker. When consumed, caffeine is quickly absorbed and distributed throughout total body water; thus blood, urine and



breast milk will have the same caffeine concentration. The half-life of caffeine, how fast blood caffeine levels drop by half, is about four to five hours. Caffeine's unpleasant side effects prevent most of us from consuming too much caffeine at any one time; however, many feel the need to drink a second cup due to its quick metabolism. Many people get a headache when they stop drinking it, making caffeine a habit-forming drug.

Caffeine is also interesting from a child's perspective. During pregnancy the metabolism of caffeine decreases so that the half-life doubles to about 10 hours. If the mother consumes caffeine regularly, the developing fetus swims in caffeine and its metabolites. Following birth, the infant does not metabolize caffeine efficiently, so that the half-life is measured in days. If a breastfeeding mom chooses to consume caffeine, she should do so right after a feeding instead of before. As with most things, understanding individual differences is important, particularly for children.

Learn more about Emil Fischer: <http://toxipedia.org/x/YOO>

Learn more about caffeine: <http://toxipedia.org/display/toxipedia/Caffeine>

### **Looking back to go forward**

*Lessons Learned* is a CHE-WA bulletin feature focusing on an historical event that provides an important lesson for ensuring a more sustainable and healthy environment. Please feel free to send suggestions to [Steve Gilbert](#).

## **Announcements**

*A daily news feed with articles and announcements is available on CHE's website:*

<http://www.healthandenvironment.org/news/announce>.

### **[Working for environmental justice and children's health.](#)**

What actions might EPA take to advance environmental justice and better protect the health of our children? The Environmental Protection Agency seeks comments.

### **[EPA proposes 2011 renewable fuel standards.](#)**

Based on the standard, each refiner, importer and non-oxygenate blender of gasoline determines the minimum volume of renewable fuel that it must ensure is used in its transportation fuel.

### **[EPA launches a collaborative website for integrated environmental modeling.](#)**

With the website, the agency is providing a state-of-the-art resource to the environmental modeling community. The iemHUB supports the development of integrated models and their use in conducting research and informing the decision-making process.

### **[New video: Toxic Chemicals Lobby: Exclusive Leaked Footage.](#)**

This cartoon from the Safer Chemicals, Healthy Families Campaign spoofs the toxic chemicals lobby.

### **[Call for comments: Strengthening Environmental Justice Research and Decision Making.](#)**

EPA invites you to read the update from the March 2010 symposium, which outlines EPA's efforts and includes a summary of the Symposium participants' recommendations.

### [Autism Society awards announced.](#)

The Autism Society will give its prestigious "Autism Champion" awards to six people and organizations who have made extraordinary contributions to serving the autism community around the world, including CHE's Learning and Developmental Disabilities Initiative.

### [EPA issues greenhouse gas reporting requirements for four emissions sources/Agency also to consider data confidentiality.](#)

EPA is finalizing requirements under its national mandatory greenhouse gas (GHG) reporting program for underground coal mines, industrial wastewater treatment systems, industrial waste landfills and magnesium production facilities.

### [Job opening: Oakland, California.](#)

Worksafe, Inc., a California-based nonprofit organization dedicated to promoting occupational safety and health (OSH) through education, training and advocacy, seeks an experienced attorney with initiative and passion for advocacy on behalf of workers in the areas of OSH and workers compensation.

## Upcoming Events

**Online Calendar.** These and more upcoming events, including calls for proposals and for abstracts, are listed in a searchable calendar: <http://www.chenw.org/cgi-bin/searchevents.cgi>.

### **1) Working at the Intersection: Health Equity, Chronic Disease, and Public Health Practice**

Tuesday July 20, 2010  
noon - 1:00 p.m. Pacific time

Sponsor: Northwest Center for Public Health Practice

Public health's intended role is to protect and improve the health of everyone in our communities. In this session, Dr. Iton will look at how public health can decrease health inequities by reducing chronic disease through community-based prevention. Dr. Iton will present approaches to mapping chronic disease distribution within the community. He will offer a framework for understanding this distribution and coupling it with strong community involvement to reduce health disparities.

Price: unknown

[Visit the website](#)

Contact: Sarah Paliulis, [paliulis@u.washington.edu](mailto:paliulis@u.washington.edu)

### **2) Greening Your Childcare Facility**

Wednesday July 21, 2010  
6:00 - 7:00 p.m. Eastern time

Sponsor: US Environmental Protection Agency Region 3 Office in collaboration with the Southeast Pennsylvania Area Health Education Center, the Philadelphia School and Community Integrated Pest Management Partnership, the Women's Health and Environmental Network and the Mid-Atlantic Center for Children's Health and the Environment

Are you a childcare owner or childcare worker? Do you have children in your care that have asthma or other respiratory issues? Do you want to make your indoor environment greener and healthier? Did you know that many chemicals in the cleaning products used in schools are toxic? Did you know that these chemicals contribute to poor indoor air quality, smog, cancer, asthma, and other diseases? Do you know there is someone to call if you suspect a child in your care has a health problem that may be related to the environment? Do you know there are alternatives to using pesticides and the usual cleaning products? This webinar will introduce green cleaning, integrated pest

management and the Region 3 Pediatric Environmental Health Specialty Unit serving Delaware, District of Columbia, Maryland, Pennsylvania, Virginia and West Virginia.

Price: free

[Visit the website](#)

Contact: Mid-Atlantic Center for Children's Health and the Environment, 866-622-2431 or [MACCHE@cnmc.org](mailto:MACCHE@cnmc.org)

### **3) National Environmental Justice Advisory Council Meeting**

Tuesday through Thursday, July 27 - 29, 2010

Washington, DC

at the Fairfax at Embassy Row, 2100 Massachusetts Avenue NW

Sponsor: US Environmental Protection Agency National Environmental Justice Advisory Council

Information will be posted on the website. Public comments are also welcome via the website or telephone. The registration and comment deadline is July 16th, 10 a.m. Eastern time.

Price: free

[Visit the website](#)

Contact: [Meetings@AlwaysPursuingExcellence.com](mailto:Meetings@AlwaysPursuingExcellence.com)

### **4) The Human Health Effects of the Gulf Coast Oil Spill: A Summary of the IOM Workshop**

Thursday July 29, 2010

1:00 p.m. Pacific / 4:00 p.m. Eastern time

Sponsor: Collaborative on Health and the Environment

The Gulf oil spill is now being called the largest single environmental disaster in our nation's history. The impact on the gulf ecosystem is only beginning to be assessed. And what of potential impacts on human health? The Institute of Medicine recently convened a meeting on that topic, and we will hear from some of the leading participants in that meeting about known and suspected health implications of the spread of crude oil and of efforts to contain and clean it. Featured speakers will include Linda Rosenstock, MD, MPH, dean of the UCLA School of Public Health and Lynn Goldman, MD, MS, MPH, dean of the Georgetown School of Public Health and Health Services.

Price: free

[Visit the website](#)

Contact: CHE, [info@healthandenvironment.org](mailto:info@healthandenvironment.org)

### **5) Public Engagement for Environmental Issues**

Tuesday through Thursday, August 3 - 5, 2010

8:30 a.m. to 5:00 p.m.

Seattle, Washington

at EOS Alliance Headquarters, 650 South Orcas Street Suite 220

Sponsor: EOS Alliance

description

Price: Public consultation and engagement over resource development and environmental issues are a legal mandate, a moral imperative, and a primary mechanism for understanding and reducing public conflict and opposition. Public engagement can allow for better project management by identifying critical public concerns and inviting the

public to constructively resolve them. This course will introduce participants to the core concepts of public engagement, including its strengths and limitations, its appropriate uses and misuses, and the strategies and tools through which it can be achieved. On the last day of the course, we will apply these principles to real-life situations. Participants are encouraged to bring in their own "problems" as material for this exercise.

[Visit the website](#)

Contact: Northwest Environmental Training Center, 206-762-1976

#### **6) CHE Cafe Call: On the Ground in the Gulf Coast: A Conversation with Wilma Subra and Michael Lerner**

Thursday August 12, 2010

10:00 a.m. Pacific / 1:00 p.m. Eastern time

Sponsor: Collaborative on Health and the Environment

Wilma Subra is one of the foremost resource scientists for low-income communities in the Gulf Coast. This MacArthur Prize-winning chemist has dedicated her career to helping low income communities get the facts they need about their chemical exposures and the implications for their health. She has worked tirelessly since the BP oil disaster to help communities and disaster workers understand their exposures. This conversation will bring the CHE community up to date on her latest findings. Michael Lerner is vice-chair and co-founder of the Collaborative on Health and the Environment and president of Commonweal, a health and environment institute in Bolinas, California.

Price: free

[Visit the website](#)

Contact: CHE, [info@healthandenvironment.org](mailto:info@healthandenvironment.org)

### **News and Journal Articles**

#### **[Brigham will recruit patients for gene study.](#)**

*Tuesday, July 13, 2010*

Patients who go to Brigham and Women's Hospital for routine care will soon be asked to provide a blood sample for genetic testing, with the results used to build a massive database to help untangle how genes, lifestyle and the environment affect human health. Boston Globe, Massachusetts.

[See a related article: [Mito-conundrum: Unraveling environmental effects on mitochondria](#)]

#### **[Three contaminants linked to skewed thyroid hormones in infants.](#)**

*Tuesday, July 13, 2010*

Infants with higher exposures to three contaminants - perchlorate, nitrate or thiocyanate - found in water, food and tobacco smoke had increased levels of thyroid stimulating hormone (TSH), a sign that the thyroid gland may not be working properly.

Environmental Health News.

[See other articles about exposures and thyroid function: [Childhood exposure to phthalates - associations with thyroid function, insulin-like growth factor I \(IGF-I\) and growth](#) and [Trouble as you boil and bubble](#) (about PFOA)]

#### **[Message fits the times.](#)**

*Tuesday, July 13, 2010*

This is not your grandparents' NAACP. Or even your parents'. That's a good thing. Those attending the NAACP's 101st annual convention have heard as much about health and environmental concerns as more traditional civil rights issues. The broader message fits the times. Kansas City Star, Missouri.

#### **[Nanomaterials in the construction industry and resulting health and safety issues.](#)**

*Tuesday, July 13, 2010*

A recent review by scientists at Rice University has looked at the benefits of using nanomaterials in construction materials but also highlights the potentially harmful aspects of releasing nanomaterials into the environment. Nanowerk Spotlight

### **[Ohio River study finds drugs, chemicals that slip through waste treatment.](#)**

Monday, July 12, 2010

Dozens of chemicals and pharmaceuticals - antidepressants, veterinary hormones, even cocaine - have been detected in the Ohio River upstream and downstream from Louisville. Louisville Courier-Journal, Kentucky.

[See other articles about water quality: [Programs aim to keep medicine out of environment](#); [Don't flush old medicine, turn it into the cops](#); [How clean is Seattle's drinking water?](#); [Benefits and dangers of water fluoridation a contentious issue nationwide](#); [Drilling chemicals may pose hazard](#); [Water pollution spreading in the Valley](#); [Federal money flowing into Lake Erie to help reduce flow of bacteria](#); [Bacteria follow rainwater to Lake Michigan](#); [When E. coli levels spike, swimmers can be at risk](#); [Water quality hardly a clear issue](#); [SC company has a selenium solution](#); [Water crisis](#); [Water in some NH wells is worrisome](#); [Sewage spill leads to closure of beach in Monterey](#); [Camp Lejeune toxic exposure report released](#); [Water draws residents' attention](#); [Residents, environmentalists take on steel mill](#) and [Weighing safety of weed killer \[atrazine\] in drinking water, EPA relies heavily on industry-backed studies](#)]

### **[EPA considers tougher rules against fly ash.](#)**

Sunday, July 11, 2010

The Environmental Protection Agency is considering regulating coal combustion residuals and has published two options in the Federal Register. Tulsa World, Oklahoma.

### **[A new analysis triples U.S. plutonium waste figures.](#)**

Sunday, July 11, 2010

The amount of plutonium buried at the Hanford Nuclear Reservation in Washington State is nearly three times what the federal government previously reported, a new analysis indicates, suggesting that a cleanup to protect future generations will be far more challenging than planners had assumed. New York Times.

[See another article about nuclear materials: [Radiation exposure at Ontario nuclear plant prompts industry-wide investigation](#)]

### **[U.S. lags behind on worker safeguards.](#)**

Sunday, July 11, 2010

In the United States, there's a lot of discussion about the difficulties of requiring hospitals and clinics to prove they are not contaminating their workers with toxic drugs. But several other countries already are requiring safeguards. InvestigateWest.

[See a related article: [Lifesaving drugs may be killing health workers](#)]

### **[Safety standards involve all food producers.](#)**

Sunday, July 11, 2010

They highlighted the progress and accomplishments the USDA and HHS has achieved during the year in the area of prioritizing prevention, strengthening inspection and enforcement, and improving response and recovery. Natural Resource Report.

[See other articles about food safety concerns: [Consumer corner: Raw vs. pasteurized milk a hot debate](#); [Feinstein's call for BPA ban bill riles lobbies](#); [Arsenic collects in top soil, contaminating rice, reducing yield](#); [Egg safety final rule](#) and [Salsa and guacamole linked to increasing number of foodborne illnesses](#)]

### **[Children keep Egypt's cotton spinning.](#)**

Saturday, July 10, 2010

Egypt is famous for its cotton. Vendors around the world boast of their luxurious Egyptian cotton sheets. But on many small farms, children are involved in all parts of cotton farming - and that includes exposure to harmful pesticides and harsh working conditions. MarketPlace.

[See another article about occupational exposure to pesticides: [Acute antimicrobial pesticide-related illnesses among workers in health-care facilities - California, Louisiana, Michigan, and Texas, 2002--2007](#)]

**[Climate change is hazardous to your health, scientist say.](#)**

*Friday, July 09, 2010*

Climate models show that global warming will increase air pollution and trigger more heat waves, floods and droughts, all of which will threaten human health. Union of Concerned Scientists.

*[See a related article: [Scientists quantify global warming's threat to public health](#)]*

**[Northern living called RA risk factor.](#)**

*Friday, July 09, 2010*

The analysis by area of residence among participants in the Nurses' Health Study who developed RA, found that those women who had lived at higher latitudes were at generally greater risk than their more southern counterparts. MedPage Today.

**[Study debunks product claims.](#)**

*Thursday, July 08, 2010*

It found many had exaggerated claims of Sun Protection Factor of SPF ratings above 50, and the group cited "potentially hazardous ingredients" in most of the products.

Clackamas Review, Oregon.

**[Lyme disease on the rise.](#)**

*Thursday, July 08, 2010*

Trying to make sense of all the contradictory evidence and information about Lyme disease is overwhelming to those who believe they have contracted the disease. Toronto Star.

**[2 million cribs recalled amid safety concerns.](#)**

*Thursday, July 08, 2010*

More than 2 million cribs from Evenflo, Delta Enterprise Corp. and five other companies were recalled Thursday amid concerns that babies can suffocate, become trapped or fall from the cribs. Associated Press.

**['Sick' lurks at home.](#)**

*Wednesday, July 07, 2010*

Fumes from cleaning agents, air fresheners, insecticides and paint can make home an unsafe environment. Kingston Jamaica Gleaner, Jamaica.

*[See related articles: [Sen. Klobuchar celebrates new formaldehyde use law](#); [Green cleaning is about protecting the health of people, animals and the planet](#); [Air scare - Your child may be at risk](#) and ['Green buildings' offer solution to health problems](#)]*

**[Food safety body sets French fries, baby food rules.](#)**

*Wednesday, July 07, 2010*

An international food safety body has set rules to cut levels of cancer-causing chemicals and bacteria in foodstuffs ranging from French fries to baby food, the UN Food and Agriculture Organization said on Monday. Reuters.

*[See other articles about environment and cancer: [Left-sided cancer: Blame your bed and TV?](#), [Fish oil might lower breast cancer risk](#) and [Can a stimulating life ward off cancer?](#)]*

**[Quitting smoking during pregnancy may not be enough to prevent harm to baby.](#)**

*Wednesday, July 07, 2010*

The authors conclude that quitting smoking during pregnancy without actively avoiding exposure to secondhand smoke may not protect the developing fetus. Scientific American.

*[See other articles about prenatal exposures and health: [Mother's diet, genes raise birth defect risk in mice](#); [Placental transfer of the polybrominated diphenyl ethers BDE-47, BDE-99 and BDE-209 in a human placenta perfusion system: an experimental study](#); [Delayed reaction: The fetal basis of adult disease, with Deborah Cory-Slechta](#) and [Pregnant drinking 'affects sperm'](#)]*

**[EPA proposal cuts pollution from power plants in 31 states and DC.](#)**

*Wednesday, July 07, 2010*

Along with local and state air pollution controls, the new proposal, called the transport

rule, is designed to help areas in the eastern United States meet existing national air quality health standards.

[See articles about air quality concerns: [Childhood incident asthma and traffic-related air pollution at home and school](#); [Are air pollutants linked to bowel disease risk?](#) and [Kids with asthma head indoors during smog season](#)]

### **Tension over cellular antennas mounts in city.**

Tuesday, July 06, 2010

The increasing popularity of smart phones is pitting companies looking to expand their coverage against city residents concerned about the dangers presented by a growing number of cellular antennas. San Francisco Chronicle.

[See a related journal article: [Epidemiological evidence for a health risk from mobile phone base stations](#) and others about radiation from phones and meters: [News analysis: Cell phone health hazards: Better safe than sorry](#), [Tinnitus and mobile phone use](#) and [Fairfax seeks ban on 'smart meter' installations](#); from scanners: [Columbia University: Body scanners increase risk of skin cancer](#) and [Heart tests add to U.S. radiation dose concerns](#) and from high-tension cables: [Highlighting the dangers of living under high tension cables](#)]

### **A burning question.**

Tuesday, July 06, 2010

Incinerating garbage might be the most suitable disposal option for Chinese cities, but citizens are worried about side effects. The question has triggered wide disputes, as some cities planning to build trash incinerators have met strong opposition from local residents. Beijing Review, China.

[See another article about disposal and health concerns: [Metro Vancouver waste-to-energy incinerator opponents fired up for a fight](#), [India's poor risk 'slow death' recycling 'e-waste'](#) and [Ill ex-prison employees blame US gov. program](#)]

### **The toxic truth about mega-farms: chemical fumes, distressed animals and poisoned locals driven from their homes and worse.**

Monday, July 05, 2010

In a 'mega-farm,' huge quantities of hormones and antibiotics are hosed away in the gallons of waste which they produce and stored in vast lagoons. And, terrifyingly, this could soon be the future of farming in Britain. London Daily Mail, United Kingdom.

[See a related article: [Utah study points to arsenic in backyard chickens](#)]

### **Toxic sites take years, decades to clean up.**

Monday, July 05, 2010

Cleanup and identification of Illinois sites contaminated with hazardous chemicals has dragged on for years, or even decades, in a process that is expensive, often contentious and nowhere near complete. Utility companies are responsible for the cleanup but can follow their own timetables. Chicago Tribune, Illinois.

### **Exposed: safety lapses at hi-tech firms.**

Sunday, July 04, 2010

A series of worrying safety lapses in the hi-tech microelectronics industry have been exposed in a new report from the Government's watchdog, the Health and Safety Executive (HSE). Companies using highly toxic chemicals to etch silicon chips for computers are under fire for failing to protect the health of their workers. Glasgow Herald, United Kingdom.

### **Heavy metal.**

Saturday, July 03, 2010

What is the risk posed by cadmium exposure? The growing prevalence of products tainted with cadmium spurred the Consumer Product Safety Commission to study safe levels of exposure, with the aim of setting a standard for acceptable levels. Time Magazine.

[See related articles about lead and cadmium: [Prevent poisoning from lead, cadmium](#); [Feds recall more children's jewelry due to toxic cadmium](#) and [Toxic playthings: Lack of lead warnings angers local woman](#)]

**[BP Texas refinery had huge toxic release just before Gulf blowout.](#)**

*Saturday, July 03, 2010*

Two weeks before the blowout in the Gulf of Mexico, the huge, trouble-plagued BP refinery in the coastal town of Texas City spewed tens of thousands of pounds of toxic chemicals into the skies. ProPublica.

*[See a related article about another refinery: [APNewsBreak: Groups say Exxon violates US air laws](#)]*

**[Disease and intelligence: Mens sana in corpore sano.](#)**

*Saturday, July 03, 2010*

Scientists have discovered direct evidence that infections and parasites affect cognition. And this trend can be seen in countries all around the world. Economist.

**[California Assembly passes bill banning BPA in baby bottles.](#)**

*Friday, July 02, 2010*

The state Assembly passed a bill Thursday to ban the chemical Bisphenol-A from baby bottles and other items that come in contact with small children. Los Angeles Times, California.

*[See related articles: [FDA is sued for failing to regulate bisphenol A](#), from Australia: [Baby bottles phased out](#), and [Sex and shopping - how retail therapy really is bad for men's health and fertility](#)]*

**[Asian study links obesity to cancer.](#)**

*Thursday, July 01, 2010*

Asians who are overweight or obese are more likely to die from cancer compared with people of normal weight, a large study in Asia has found. Reuters Health.

*[See related articles about obesity and health: [Americans getting fatter, especially in the South](#) and [Taking public transit might help you stay slim](#)]*

**[Mystery unraveled: How asbestos causes cancer.](#)**

*Wednesday, June 30, 2010*

These researchers addressed the paradox of how asbestos fibers that kill cells could cause cancer, since a dead cell should not be able to grow and form a tumor. ScienceDaily.

**[Not enough folate may quicken hearing loss: Study.](#)**

*Wednesday, June 30, 2010*

Low blood levels of folate are associated with a 35 per cent increased risk of hearing loss, says a new study from Australia that strengthens the link between B vitamins and hearing.

*[See another article about vitamins and health: [Vitamin D deficiency linked to Alzheimer's disease](#)]*

**[Gulf seafood: Who decides how safe is safe?](#)**

*Wednesday, June 30, 2010*

AOL News spent the past two weeks chasing down precisely who is testing Gulf seafood, and how they decide what is safe to eat. The analysis is important. Public health experts say they are concerned less about E. coli or salmonella; what they fear is the possibility of cancer or neurologic impact. AOL News.

*[See a related article: [Gulf seafood tested for oil but not dispersant](#)]*

**[Seizure concern: Split up chickenpox, MMR vaccines.](#)**

*Wednesday, June 30, 2010*

Combining two common childhood immunizations - the chickenpox vaccine and the joint measles, mumps and rubella shot, or MMR - slightly increases the risk of fever-related seizures in toddlers, a new study shows. USA Today.

**[Do the health benefits of cycling outweigh the risks?](#)**

*Wednesday, June 30, 2010*

For the individuals who shift from car to bicycle, we estimated that beneficial effects of increased physical activity are substantially larger (3 - 14 months gained) than the potential mortality effect of increased inhaled air pollution doses (0.8 - 40 days lost) and

the increase in traffic accidents (5 - 9 days lost). Environmental Health Perspectives. [See other articles about urban environments and health: [Trees a 'low-cost' solution to air pollution and biodiversity loss in cities](#) and [Air quality: NGOs blast government's 'excuses'](#)]

**[EPA releases first round of toxicity testing data for eight oil dispersants.](#)**

Wednesday, June 30, 2010

EPA's results indicated that none of the eight dispersants tested, including the product in use in the gulf, displayed biologically significant endocrine disrupting activity.

[See another article about health concerns to come from the Gulf oil spill: [Banned trailers return for latest Gulf disaster](#) and [Mississippi agency says it can't stop BP from dumping spill waste](#)]

The Collaborative on Health and the Environment offers this information as a service but does not endorse any of the events, articles or announcements.

Companion bulletins are available for different audiences:

- For those interested in general children's environmental health: [http://www.healthandenvironment.org/working\\_groups/childrens\\_health/bulletins](http://www.healthandenvironment.org/working_groups/childrens_health/bulletins)
- For those interested in environmental health and learning and developmental disabilities: <http://www.iceh.org/LDDIbulletins.html>

While there is overlap with this bulletin, there are some events and announcements unique to those bulletins.

If you would like to join the Collaborative on Health and the Environment (CHE) and the Washington State Regional Group, please complete the application on the CHE website: <http://www.healthandenvironment.org/application> Joining CHE means receiving up to four email messages a month from the CHE National listserv. CHE costs nothing to join and the benefit is shared information and opportunities for further engagement, if you choose. Be sure to mark that you want to join the Washington State regional group at the bottom of the application.

Nancy Snow

**Collaborative on Health and the Environment**

[Join Our Mailing List!](#)