



## Collaborative on Health and the Environment - Washington



Biweekly Bulletin November 18, 2009

This bulletin lists upcoming events plus recent announcements, news and journal articles, calls for proposals and other items related to learning environmental contributors to human health in Washington State and the Pacific Northwest. They are archived and searchable on our website: <http://washington.chenw.org/bulletins.html>

### CHE-WA Highlights

#### Next Meeting and Special Presentation

Doug Abrams, author of *Eye of the Whale*, and Sheela Sathyanarayana, MD, MPH, researcher and assistant professor at the University of Washington and Seattle Children's Hospital, will present "Endocrine disrupting chemicals (EDCs): What can a novelist and a pediatrician tell us about them?"

Doug, who is flying in from California for this meeting, will offer a dynamic presentation that weaves together readings from his novel with the research he did to inform his writing. Sheela will then provide some of the latest science on EDCs and what we can do to reduce our exposures to them. The last hour of the meeting will focus on next steps for protecting children's environmental health in this region - a follow-up to the incredibly successful Northwest Children's Environmental Health Forum held in early October. For details, [visit the CHE-WA website](#) or see Event #4 below.

#### Forum Presentations Online

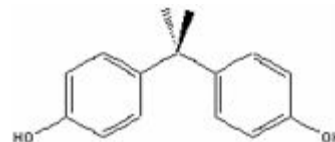
Many of the presentations from the Children's Environmental Health Forum in October are now posted on the Forum web page: <http://www.chenw.org/CEHforum.html> Videos will be added as they become available.

### Lessons Learned

#### Bisphenol-A (BPA) - Endocrine Disruptor

by Steven G. Gilbert, PhD, DABT

Bisphenol-A (BPA) was created in the late nineteenth century (1891) by the Russian Aleksandr Dianin who coined it "Dianin's Compound." BPA's estrogenic properties were recognized early but were not strong enough to be useful as a drug when compared to diethylstilbestrol (DES), which was subsequently found to cause cancer. Numerous studies have documented adverse developmental and reproductive health effects of low-level exposure to BPA.



BPA is produced at over 4 billion pounds per year and widely used in plastics, can liners and children's products such as baby bottles. Biomonitoring studies have shown that almost everyone is exposed to BPA. A precautionary approach requires that new drugs be carefully tested and reviewed by the FDA. A similar approach should be applied to industrial chemicals to protect our children and future generations.

More on BPA: <http://toxipedia.org/x/5yl>

#### Looking back to go forward

*Lessons Learned* is a CHE-WA bulletin feature focusing on an historical event that

provides an important lesson for ensuring a more sustainable and healthy environment. Please feel free to send suggestions to [Steve Gilbert](#).

## Announcements

*A daily news feed with articles and announcements is available on CHE's website:*

<http://www.healthandenvironment.org/news/announce>.

### **[Call for presenters: 2nd Annual NW Environmental Health Conference.](#)**

A variety of leading edge presentations addressing research, patient care, healthcare facilities, community based work, and current and emerging policy issues in the field of environmental health are being accepted for the conference March 5-6, 2010.

### **[AMA adopts Endocrine Society Resolution calling for new policies to decrease public exposure to endocrine-disrupting chemicals.](#)**

The American Medical Association's (AMA) House of Delegates adopted a resolution calling on the AMA to work with the federal government to enact new federal policies to decrease the public's exposure to endocrine-disrupting chemicals (EDCs). Medical News Today.

### **[New video: The Male Predicament.](#)**

The Male Predicament is the informative and compelling lecture that Dr. Theo Colborn has delivered across the U.S. and overseas. Using scientific facts, photos and a touch of humor, it describes in detail how males are susceptible to endocrine disrupting chemicals.

### **[New EPA website provides tools to cut energy costs and greenhouse gas emissions from homes.](#)**

Home owners, buyers and renters have a new resource for going green indoors and outdoors. EPA's new Green Homes website will help people make their homes greener with tips on reducing energy consumption, carbon footprints, waste generation and water usage, as well as improving indoor air quality.

### **[EPA seeks comment on new permit for animal feeding operations in Idaho.](#)**

The public is encouraged to take a close look at a new proposed Clean Water Act permit that would affect animal feeding operations in Idaho.

### **[Call for comments: EPA to hold public hearings on proposed greenhouse gas tailoring rule for large facilities.](#)**

The U.S. Environmental Protection Agency will hold two public hearings on the proposed greenhouse gas (GHG) emissions thresholds defining when Clean Air Act permits would apply to new or existing industrial facilities. The hearings will be held on November 18 in Arlington, Va. and November 19 in Rosemont, Ill. EPA will accept written comments on the proposed rule until December 28, 2009.

### **[New report: Public Health Impacts of Wind Turbines.](#)**

Impacts noted by the NRC that may have the most effect on health include noise and low frequency vibration, and shadow flicker. Minnesota Department of Health, Environmental Health Division.

### **[America Recycles Day -- Beyond bottles to buildings.](#)**

By recycling at home and at work, you can help to reduce carbon emissions associated with extracting natural resources, manufacturing new products and waste disposal. US Environmental Protection Agency.

### **[New report: Disinfectant Overkill.](#)**

Scientific studies have shown that disinfectant chemicals have been linked to chronic health impacts like asthma, hormone imbalance, potential reduced fertility, and immune system problems. Women's Voices for the Earth.

[See a related article: [Cleaning supplies can contaminate classroom air](#)]

### **[Radio Frequencies: Afsset recommends reducing exposure.](#)**

The report by the French Agency for Environmental and Occupational Health Safety

(Afsset) shows that radiofrequency radiation affects cellular functions, as reported by around ten experimental studies considered by Afsset as being indisputable.

[See related journal articles: [Exposure to 1800 MHz radiofrequency radiation induces oxidative damage to mitochondrial DNA in primary cultured neurons](#) and [Experts urge tracking of X-rays, CT scans](#)]

#### **[U.S. EPA makes available data on compliance with hazardous waste, air regulations.](#)**

The U.S. Environmental Protection Agency (EPA) released new information on EPA and state enforcement of hazardous waste and air regulations. In addition, the EPA posted data that allows the public, for the first time, to compare toxic releases with compliance data from facilities.

#### **[EPA proposes new pesticide labeling to control spray drift and protect human health.](#)**

The U.S. Environmental Protection Agency has rolled out proposed guidance for new pesticide labeling to reduce off-target spray and dust drift. The new instructions, when implemented, will improve the clarity and consistency of pesticide labels and help prevent harm from spray drift.

#### **[German Medical Association warns: "Swine flu vaccine" unsuitable for patients suffering from environmental diseases and other chronic multi-system illnesses.](#)**

Swine flu vaccine is unsuitable for patients with environmental diseases and other chronic multi-system illnesses. Chemical Sensitivity Network.

#### **[Million Baby Crawl events.](#)**

Babies everywhere are "crawling to Washington" and saying NO to toxic chemicals found in household products. Attend your local Crawl to Action event or create a new event for your community.

#### **[Call for proposals: State Supplemental Funding for Healthy Communities, Tobacco Control, Diabetes Prevention and Control, and Behavioral Risk Factor Surveillance System.](#)**

Recovery Act funds must be used for obesity, nutrition, physical activity and tobacco control strategies to change systems, develop and implement policies, change the environment in which eating, tobacco use, and physical activity occur, and impact population groups rather than individuals within the two-year timeframe for this award.

#### **[Call for proposals: Federally-recognized Indian tribes located within the greater Puget Sound basin.](#)**

EPA is soliciting proposals that implement strategies and actions that are of high ecosystem or human health priority to tribes, and that are consistent with the EPA-approved plan for restoring and protecting Puget Sound.

#### **[Call for proposals: Increasing scientific data on the fate, transport and behavior of engineered nanomaterials in selected environmental and biological matrices](#)**

The U.S. Environmental Protection Agency (EPA), the National Science Foundation (NSF), and the National Institute of Food and Agriculture (NIFA) of the U.S. Department of Agriculture (USDA), are seeking applications proposing research to provide data that improves the scientific understanding of fate/transport and behavior of engineered nanomaterials. Applications are due February 2, 2010.

#### **[Job opening: Virginia.](#)**

The Association of State and Territorial Health Officials has an opening for Director, Environmental Health to be responsible for directing policy development and analysis, and program implementation on environmental health issues that may include issues such as climate change, natural disasters, land use, healthy housing, chemical exposure, food safety, safe water, and environmental health infrastructure and capacity.

#### **[Job opening: Washington, DC.](#)**

Earthjustice, the nonprofit law firm for the environment, currently has an opening for a Advocacy/Communications Campaign Manager.

## Upcoming Events

**Online Calendar.** These and more upcoming events are listed in a searchable calendar: <http://www.chenw.org/cgi-bin/searchevents.cgi>.

### **1) Healthy People 2020 Public Meeting**

Friday November 20, 2009  
Seattle, Washington  
at Red Lion Hotel on Fifth Avenue

Sponsor: US Department of Health and Human Services

This meeting will help set national public health goals and objectives for Healthy People 2020. The public meeting is open to everyone, but seating is limited. The public is invited to submit a question or comment ahead of time, via the website, about the development of Healthy People 2020. Your questions will be addressed at the public meeting. An agenda will be posted before the meeting.

Price: free

[Visit the website](#)

Contact: [2020regional@air.org](mailto:2020regional@air.org)

### **2) New Habits of Mind for New Solutions**

Friday November 20, 2009  
8:30 a.m. to 5:00 p.m.  
Seattle, Washington  
at NWETC Headquarters, 650 South Orcas Street, Suite 220

Sponsor: EOS Alliance

This eight-hour class is about systems thinking, systems in the natural world, and ways to increase our ability to address complex problems. Our class will give you the competence and confidence to start using systems thinking in your organizations and communities to better understand complex problems - whether you find them in the natural environment or in social systems. Participants will learn what makes a system a system, and why systems thinking is so useful and so necessary in our world. We'll share our understanding of the ways and habits of systems thinking, as well as how to apply these habits. We'll learn about some systems thinking tools, such as causal loops and behavior over time graphs, and how to identify feedback loops. We'll use the "iceberg model" to deepen our understanding of leverage points for change. At the end, we'll put it all together - applications and practice. Learning will occur through hands-on activities such as small group conversations, large group dialogue, individual reflection, system thinking games, viewing personal stories through a new lens, and the collaborative exploration of complex problems. Both instructors' intense interest in the natural world has been enriched through the study and application of systems thinking.

Price: \$195, \$155 reduced tuition for Native American tribes; government employees; nonprofits; students; and NAEP, NEBC, NWAEP members

[Visit the website](#)

Contact: Northwest Environmental Training Center, 206-762-1976

### **3) Public Meetings on the State's Climate Change Impacts Response Strategy**

Monday November 30, 2009  
6:00 - 8:00 p.m.  
Lacey, Washington  
at the Department of Ecology Headquarters Main Auditorium, 300 Desmond Drive

Sponsor: Washington Department of Ecology in partnership with the Departments of

## Agriculture, Commerce, Fish and Wildlife, Natural Resources, and Transportation

In 2009, the Washington legislature passed Senate Bill 5560 directing these agencies "to develop an integrated climate change response strategy to better enable state and local agencies, public and private businesses, nongovernmental organizations, and individuals to prepare for, address, and adapt to the impacts of climate change." The strategy is due to the Legislature in December of 2011. The six state agencies tasked with developing the state climate change response strategy are requesting initial feedback from the public. These meetings will be used to provide an overview of the strategy framework, provide background on the need for such a strategy for Washington State, and most importantly to answer questions and gather feedback from the public on what issues the strategy should address.

Price: free

[Visit the website](#)

Contact: Spencer Reeder, 360-407-6229 or [spencer.reeder@ecy.wa.gov](mailto:spencer.reeder@ecy.wa.gov)

### **4) Endocrine-disrupting Chemicals (EDCs): What Can a Novelist and a Pediatrician Tell Us about Them?**

Tuesday, December 1, 2009

2:00 - 4:30 p.m.

Seattle, Washington and virtual  
at Antioch University Seattle, Room 100

Sponsor: Collaborative on Health and the Environment - Washington

Join Doug Abrams, author of *Eye of the Whale*

([www.healthandenvironment.org/articles/homepage/6468](http://www.healthandenvironment.org/articles/homepage/6468)), and Sheela Sathyanarayana, MD, MPH ([depts.washington.edu/mrhr/sathyana.html](http://depts.washington.edu/mrhr/sathyana.html)), researcher and assistant professor at the University of Washington and Seattle Children's Hospital, to learn more about EDCs and how they can impact the health of wildlife and humans. Doug, who is flying in from California for this meeting, will offer a dynamic presentation that weaves together readings from his novel with the research he did to inform his writing. Sheela will then provide some of the latest science on EDCs and what we can do to reduce our exposures to them. Plus, the last hour of the meeting will focus on next steps for protecting children's environmental health in this region - a follow-up to the incredibly successful Northwest Children's Environmental Health Forum held in early October. The entire event will also be available as a live conference call.

Price: free

[Visit the website](#)

Contact: [info@healthandenvironment.org](mailto:info@healthandenvironment.org)

### **5) To Ban or Not to Ban: A Review of Atrazine from Both Sides of the Atlantic**

Tuesday December 8, 2009

10:00 a.m. Pacific / 1:00 p.m. Eastern time

Sponsor: Collaborative on Health and the Environment

If the same science is available on both sides of the Atlantic, why would Europe choose to ban the use of atrazine while the US has not? Join CHE as we explore this question and other pesticides issues with speakers from both Europe and the US. We will discuss the findings of the Agricultural Health Study recently conducted by NIH and the EPA, look closer at the scientific literature addressing atrazine and the implications for human health and conclude with a conversation with colleagues from the Health and Environment Alliance (HEAL) in Europe about pesticides, including their choice to ban atrazine.

Price: free

[Visit the website](#)

Contact: [info@healthandenvironment.org](mailto:info@healthandenvironment.org)

### **6) Introduction to Managing Environmental Data with Microsoft Access 2007**

Wednesday and Thursday, December 9 - 10, 2009

8:30 a.m. to 5:00 p.m.

Kirkland, Washington

at Yarrow Bay Office Park - One North Building, 10604 NE 38th Place, Suite 118

Sponsor: Northwest Environmental Training Center

This course is part of a series and is immediately followed by the Managing Environmental Data With Microsoft Access 2007, Applying the Tools workshop, December 11, 2009. Participants may register for either course individually or both courses. A discount applies when registering for both courses. After completing this course, participants will be able to 1) understand concepts of database structure and design, 2) create relationships between tables, 3) import and export datasheets, 4) perform simple queries on multiple tables, 5) construct and customize forms for retrieving data and 6) build macros for automating tasks.

Price: \$495 or \$395 for Native American Tribes; nonprofits; government agencies; students; and NAEP, NEBC, NWAEP members; an early-bird discount of \$20 is available until November 6, 2009.

[Visit the website](#)

Contact: NETC, 206-762-1976 or [info@nwetc.org](mailto:info@nwetc.org)

## **News and Journal Articles**

### **[Overconsumption of selenium can increase cholesterol.](#)**

*Tuesday, November 17, 2009*

A new study from the University of Warwick has discovered taking too much of the essential mineral selenium in your diet can increase your cholesterol by almost 10%. Medical News Today.

### **[Going green and fighting toxins at home and at work.](#)**

*Tuesday, November 17, 2009*

A nurse with environmental health experience spoke to EHS Today about minimizing contact with everyday toxins and taking steps to create greener workplaces.

### **[Low-emission locomotives a boost to public health.](#)**

*Tuesday, November 17, 2009*

A new crop of "ultra-low emission" short-haul locomotives could have significant public health benefits, according to rail industry officials and federal health experts, who suggest that they could help decrease the risk of cancer and heart and respiratory disease for people living near rail yards. Washington Post.

### **[Mystery of Bangladesh's mass arsenic poisoning solved.](#)**

*Monday, November 16, 2009*

Researchers have pinpointed the source of what is probably the worst mass poisoning in history, according to a study published Sunday. Agence France-Presse.

[See a related article: [Arsenic makes good cells go bad](#)]

### **[CDC study shouldn't rule out antibiotics for pregnant women, doctor says.](#)**

*Monday, November 16, 2009*

A recent Centers for Disease Control and Prevention study on the association between antibiotics and certain birth defects may be a bit unsettling to pregnant women. Cleveland Plain Dealer, Ohio.

### **[Missing out on brain food puts kids at risk.](#)**

*Monday, November 16, 2009*

An overwhelming majority of children do not eat enough fish, placing them at risk of heart disease, asthma, attention deficit hyperactivity disorder and retarded brain development, new research says. Sydney Morning Herald, Australia.

[See related articles: [EPA: Toxic chemicals in freshwater fish widespread](#) and [If you eat fish, know the risk from mercury](#)]

#### **Toxicants in plastic 'feminise boys.'**

Monday, November 16, 2009

Chemicals in plastics alter the brains of baby boys making them "more feminine", say US researchers. Males exposed to more phthalates in the womb went on to be less likely to play with boys' toys like cars or to join in rough and tumble games. The research adds to concerns about the safety of phthalates, found in vinyl flooring and PVC shower curtains. BBC.

#### **Adult smoking rises in U.S. for first time since 1994.**

Friday, November 13, 2009

Cigarette smoking rose slightly for the first time in almost 15 years, dashing health officials' hopes that the U.S. smoking rate had moved permanently below 20 percent. Associated Press.

[See a related article: [Smoking: why women are at great risk](#)]

#### **Acrylamide not tied to thyroid, head-neck cancers.**

Friday, November 13, 2009

The chemical acrylamide, which is classified as a probable cancer-causing agent, does not appear to increase overall risk for mouth, throat, voice box, or thyroid cancers, with the possible exception of an increased risk of mouth cancer among non-smoking women, study findings hint. Reuters.

#### **Medicines to deter some cancers are not taken.**

Friday, November 13, 2009

As the nation's war on cancer continues, with little change in the overall cancer mortality rate, many experts on cancer and public health say more attention should be paid to prevention. But prevention has proved more difficult than many imagined. New York Times.

[See a related article: [10 ways to reduce cancer risk](#)]

#### **Food-borne ills can have lasting consequences: report.**

Friday, November 13, 2009

Researchers at the Center for Foodborne Illness Research & Prevention in Pennsylvania studied the five most common food-borne diseases and found they can cause life-long complications including kidney failure, paralysis, seizures, hearing or visual impairments and mental retardation. Reuters.

#### **Evidence mounting but still fuzzy on cell phones, cancer.**

Wednesday, November 11, 2009

In the year since a U.S. cancer researcher's warning drew wide attention, more evidence is emerging that long-term cell phone use is associated with cancer, but there's still not a definitive explanation or proof of cause and effect. CNN.

[See an opposing article: [Mobile phones are very safe, says expert](#)]

#### **BPA, sexual problems may be linked.**

Wednesday, November 11, 2009

Chinese factory workers exposed to huge amounts of bisphenol A had a substantially higher risk of sexual dysfunction, according to a new study that is expected to add more urgency to the question of the plastic chemical's safety. Milwaukee Journal Sentinel, Wisconsin.

#### **Plastics have more harmful impact than thought.**

Tuesday, November 10, 2009

Plastic pollution is not just a nuisance, it could be toxic. New research suggests that plastic is a source of dissolved substances that are easily dispersed by ocean currents and may be toxic to humans and animals. Albert Lea Tribune, Minnesota.

[See a related article: [EPA to impose standards on PVC plant emissions](#)]

### **Early life stress 'changes' genes.**

Tuesday, November 10, 2009

A study in mice has hinted at the impact that early life trauma and stress can have on genes, and how they can result in behavioural problems. Scientists described the long-term effects of stress on baby mice in the journal Nature Neuroscience. BBC.

### **B.C. study links acetaminophen and asthma risk.**

Tuesday, November 10, 2009

A new study led by scientists at the Vancouver Coastal Health Research Institute has confirmed that use of acetaminophen by children and adults is associated with the development of asthma and wheezing. Vancouver Sun, British Columbia.

### **Soldiers claim war zone contractors exposed them to toxins.**

Monday, November 09, 2009

U.S. military contractors in Iraq and Afghanistan are fouling the nests of U.S. soldiers with pollution, poisoning the troops in the very bases meant to be their sanctuaries. That's the central allegation in a new set of lawsuits against three military contractors. Nashville Post, Tennessee.

[See related articles: [Veterans' benefits for Agent Orange exposure](#), [Huge rise in birth defects in Falluja](#) and [Critics say Marine Corps contract on Camp Lejeune is conflict of interest](#)]

### **Chemotherapy's link to hearing loss found.**

Monday, November 09, 2009

Canadian researchers have discovered why a common chemotherapy drug causes hearing loss in some childhood cancer patients, paving the way for a simple saliva or blood test that can predict who is most likely to develop the problem. Toronto Globe and Mail, Ontario.

### **Very weak magnetic fields lower sperm quality.**

Sunday, November 08, 2009

De-Kun Li's new epidemiological study showing that extended exposure to weak magnetic fields as low as 1.6 mG (0.16  $\mu$ T) can have negative effects on sperm quality was published today by Reproductive Toxicology. Microwave News.

### **Toxic toy checkup offers peace of mind for concerned parents.**

Sunday, November 08, 2009

Organizers cautioned that, just because Congress passed legislation last year meant to rid children's toys of unsafe levels of lead and phthalates, there's still cause for concern about even small amounts of those toxins. Eugene Register Guard, Oregon.

### **Association of low-dose exposure to persistent organic pollutants with global DNA hypomethylation in healthy Koreans.**

Saturday, November 07, 2009

We found that low dose exposure to POPs, in particular OC pesticides, was associated with global DNA hypomethylation in apparently healthy Koreans. Environmental Health Perspectives.

### **Red, processed meats linked to prostate cancer.**

Friday, November 06, 2009

Researchers at the National Cancer Institute found that among more than 175,000 men they followed for nine years, those who ate the most red and processed meats had heightened risks of developing any stage of prostate cancer, or advanced cancer in particular. Reuters Health.

[See a related article: [Moderate exercise may lower prostate cancer risk](#)]

### **More evidence nanoparticles damage DNA.**

Friday, November 06, 2009

Researchers in the United Kingdom have found some nanoparticles -- which can be found in common household items -- can damage DNA without even penetrating the

cells. ABC News, Australia.

[See a rebuttal article: [Experts criticize nanoparticle study](#) and another related article: [Barrier capacity of human placenta for nanosized materials](#)]

### **[Red wine compound slows brain plaque linked to Alzheimer's disease, study finds.](#)**

Friday, November 06, 2009

A compound in red wine may offer yet another health benefit -- it may slow formation of the amyloid plaques associated with Alzheimer's disease. Environmental Health News.

### **[Research shows pesticide-free homes can be bug-free, too.](#)**

Friday, November 06, 2009

Now research has shown that these "good housekeeping" techniques not only minimize chemical use, but they are even more effective at controlling pests than hiring an exterminator to spray powerful, toxic pesticides. Environmental Health News.

### **[Target, Kmart and Toys R Us agree to settle lead claims.](#)**

Friday, November 06, 2009

Three major retailers have agreed to pay nearly half a million dollars to settle a lawsuit stemming from the companies' sale of toys containing excessive amounts of lead, the California attorney general's office said Thursday. Los Angeles Times, California. [See related articles: [\\$2.5 million awarded in lead-paint lawsuit](#), [AG to area landlords: You must comply with lead laws](#), [Activists want to get lead out of city soil](#), [Environmental causes of violence](#), [Special Report: Some vinegars -- often expensive, aged balsamics -- contain a big dose of lead](#), [Feds powerless to recall toxic trinkets: audit](#), [China faces reckoning over lead production](#), [Interaction of stress, lead burden and age on cognition in older men: The VA Normative Aging Study](#)]

### **[More health for your buck: Health sector functions to secure environmental health.](#)**

Thursday, November 05, 2009

Modifiable environmental risk factors are responsible for approximately one quarter of the global burden of disease. Bulletin of the World Health Organization.

### **[Healthy environment and economy.](#)**

Thursday, November 05, 2009

We Californians pay for our exposure to toxic air pollution with our lives and our wallets. A 2008 report by Cal State Fullerton researchers found that the health impacts of air pollution, especially diesel emissions, costs the state \$28 billion annually. San Diego Union-Tribune, California.

[See related articles: [Air pollution may up risk of infant lung infections](#), [Air pollution takes a toll on young lungs](#), [Children closest to harbor trade roadways suffer more respiratory issues](#), [Short-term effects of PM10 and NO2 on respiratory health among children with asthma or asthma-like symptoms: A systematic review and meta-analysis](#), [Air quality is a sports safety issue](#), [Air pollution at schools](#) and [Bay Area agency says check before you burn](#)]

### **[Obesity linked to specific cancers.](#)**

Thursday, November 05, 2009

About 100,500 new cases of cancer are caused by obesity every year, according to the most comprehensive attempt ever to estimate the cancers attributed to extra weight. USA Today. [See a related article: [Fighting obesity may take a village](#)]

### **[3 yards and a cloud of what?](#)**

Thursday, November 05, 2009

In the latest generation of artificial turf are thousands of tiny rubber crumbs made from pulverized tires. What if the crumbs end up in a player's mouth or lungs? At least 100 different chemicals and heavy metals like lead are found in tire crumbs. Are there long-term health risks from playing on these fields? Omaha World-Herald, Nebraska.

### **[Folic acid tied to asthma risk.](#)**

Thursday, November 05, 2009

Folic acid supplements taken by mid-to-late-term pregnant mothers may lead to a much higher risk of asthma in the child, a new study has found. Melbourne Age, Australia.

[See a related article: [Formaldehyde exposure and asthma in children: A systematic review](#)]

### **Does vitamin D improve brain function?**

Wednesday, November 04, 2009

Scientists have now linked this fat-soluble nutrient's hormonelike activity to a number of functions throughout the body, including the workings of the brain. Scientific American.

### **Groups oppose EPA review of atrazine.**

Wednesday, November 04, 2009

Farm groups joined the manufacturer of the popular herbicide atrazine Tuesday in accusing the Obama administration of bowing to environmentalist pressure in initiating a review of the chemical's safety. Des Moines Register, Iowa.

### **Premature births lift U.S. infant death rate.**

Wednesday, November 04, 2009

Poor access to prenatal care, maternal obesity and smoking, too-early cesarean sections and induced labor and fertility treatments are among the reasons for preterm births, experts said. Associated Press.

Many of the news articles above come from [Environmental Health News](#).

The Collaborative on Health and the Environment offers this information as a service but does not endorse any of the events, articles or announcements.

Companion bulletins are available for different audiences:

- For those interested in general children's environmental health: [http://www.healthandenvironment.org/working\\_groups/childrens\\_health/bulletins](http://www.healthandenvironment.org/working_groups/childrens_health/bulletins)
- For those interested in environmental health and learning and developmental disabilities: <http://www.iceh.org/LDDIbulletins.html>

While there is overlap with this bulletin, there are some events and announcements unique to those bulletins.

If you would like to join the Collaborative on Health and the Environment (CHE) and the Washington State Regional Group, please complete the application on the CHE website: <http://www.healthandenvironment.org/application> Joining CHE means receiving up to four email messages a month from the CHE National listserv. CHE costs nothing to join and the benefit is shared information and opportunities for further engagement, if you choose. Be sure to mark that you want to join the Washington State regional group at the bottom of the application.

Nancy Snow

**Collaborative on Health and the Environment**

Join Our Mailing List!

Email Marketing by

